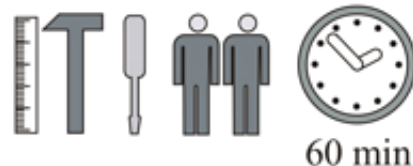
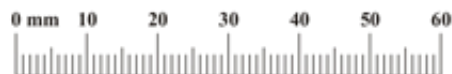
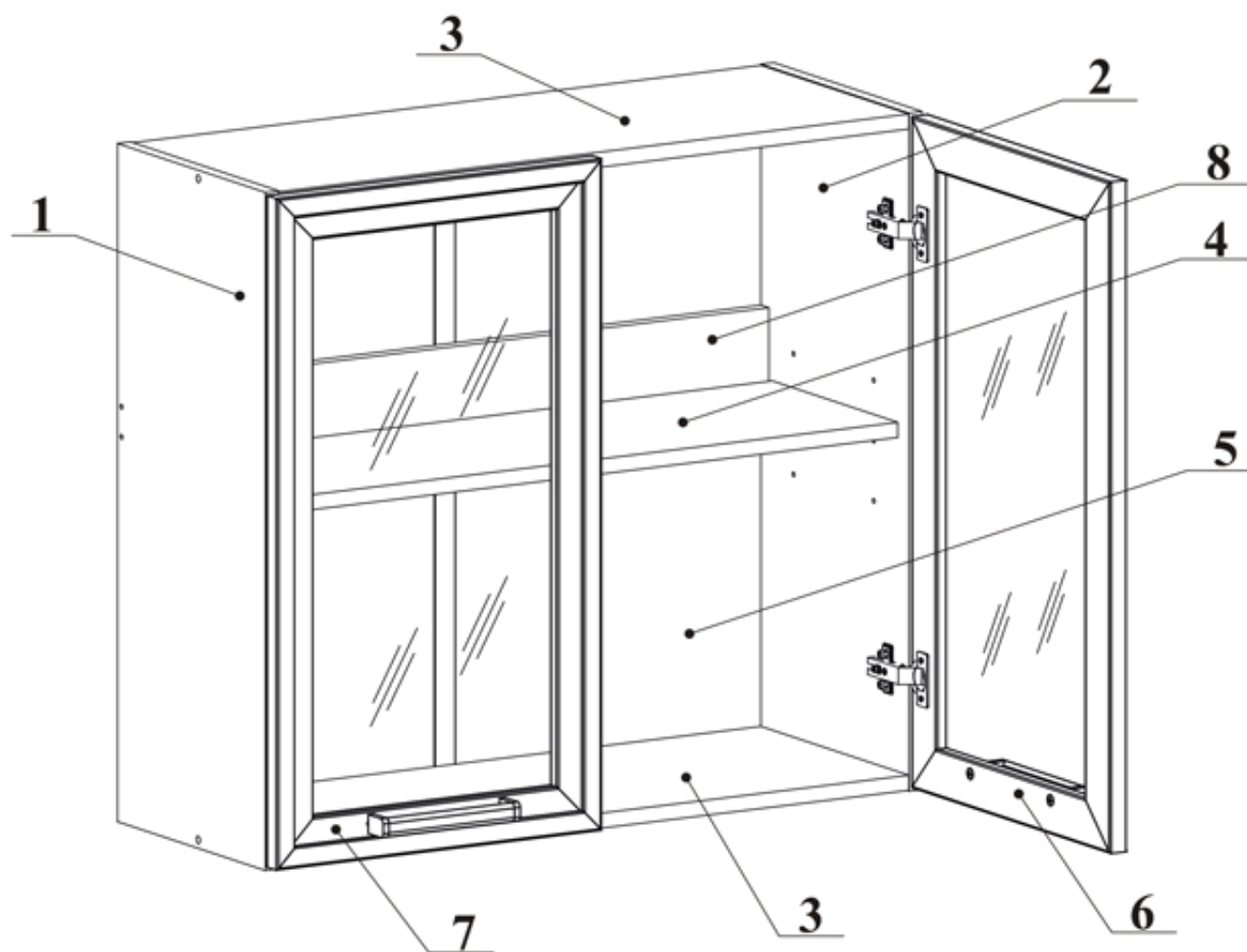













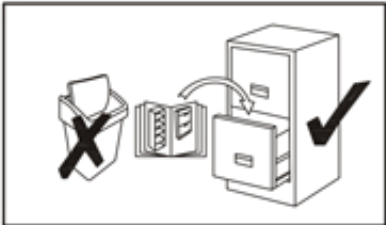
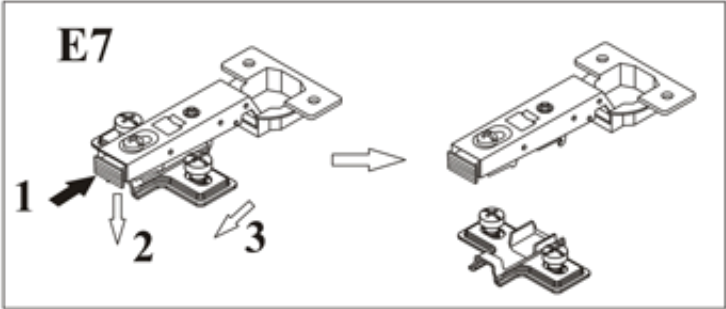
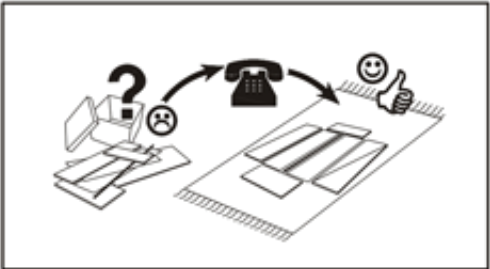
Assembly Instructions for cabinets: W60SA, W80SA



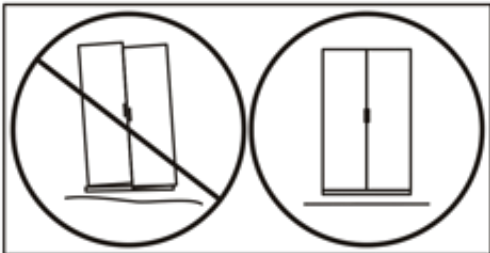
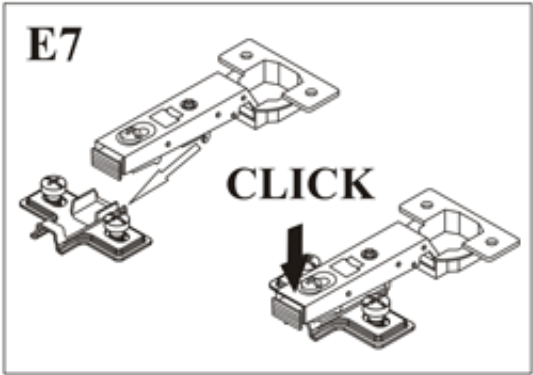
60 min

| | | | | | |
|--|---|---|---|--|---|
| A1 X8  | ZN X2  | D26 X4  | G7 X4  | B11 X4  | G4 X4  |
| E7 X4  | E8 X4  | D10 X8  | G8 X1  | D40 X4  | G6 X4  |
| B3 W60SAX26 W80SAX30 Ø1,4x25  | G2 X1  | <p>Check all the items are in your box according to the list on this manual. If you are missing anything, please check all other boxes first and then send us an email with a list of the parts you need.</p> | | | |

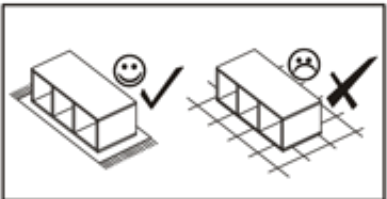
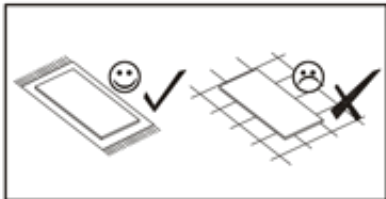
W60SA, W80SA



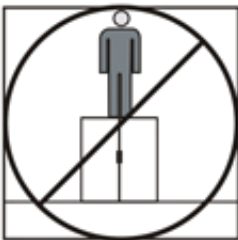
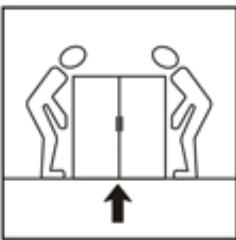
Keep your product assembly manual in a safe place until your kitchen is finished.



Be sure to assemble your cabinets on a flat surface and keep them straight and square.



Assemble your cabinets on a rug or a surface that will not scratch or damage them.



Do not push cabinets into place. Get someone to help you lift the cabinets into place, or you could risk damaging the feet.
Do not stand on the cabinets.

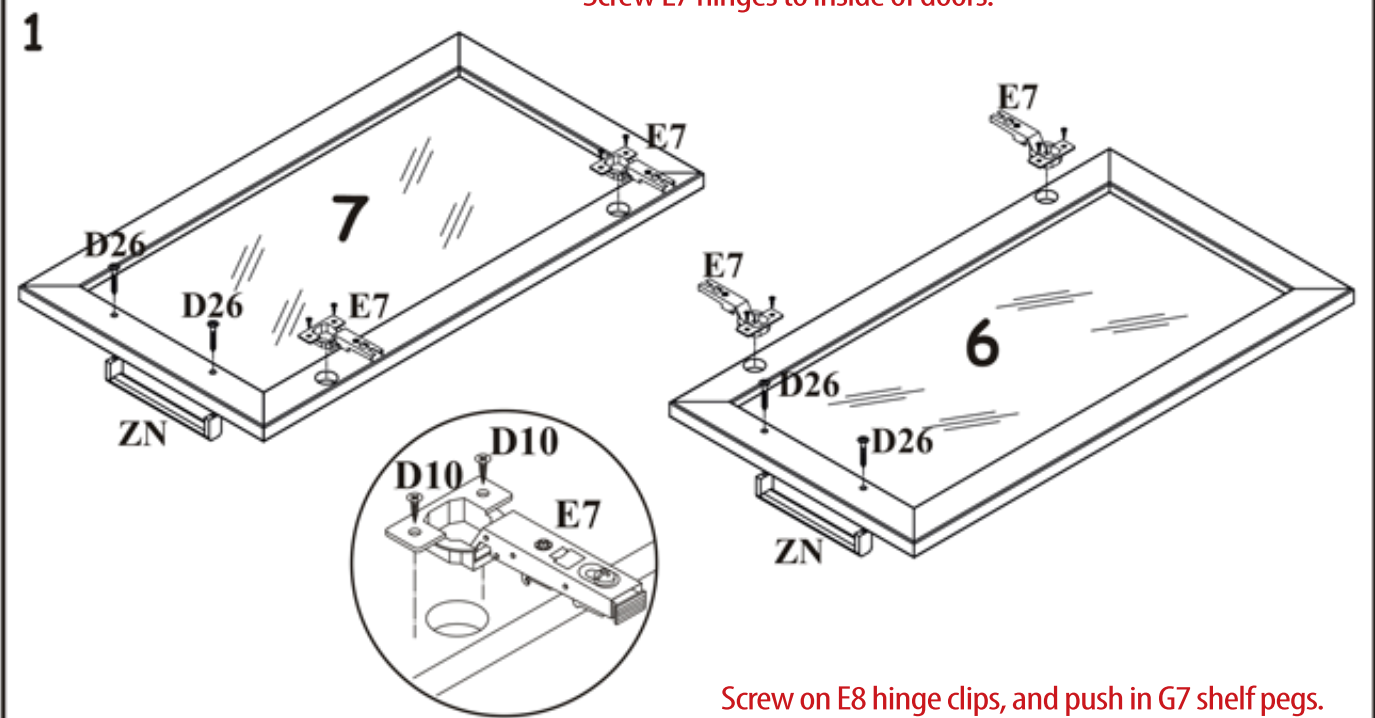


Once protective film on thermal wrap doors is removed, do not clean for 7 days. This allows the surface to harden. Only clean the cabinets with a small amount of warm water or non harsh chemicals.

W60SA, W80SA

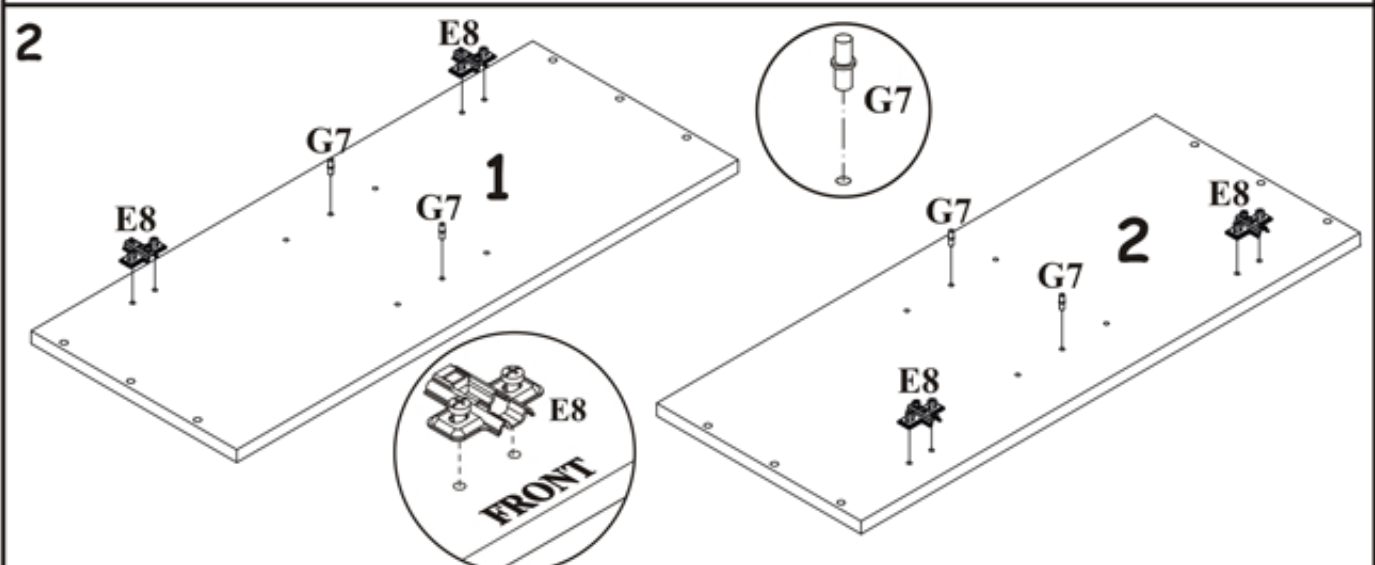
Screw handles on through predrilled holes.
Screw E7 hinges to inside of doors.

1



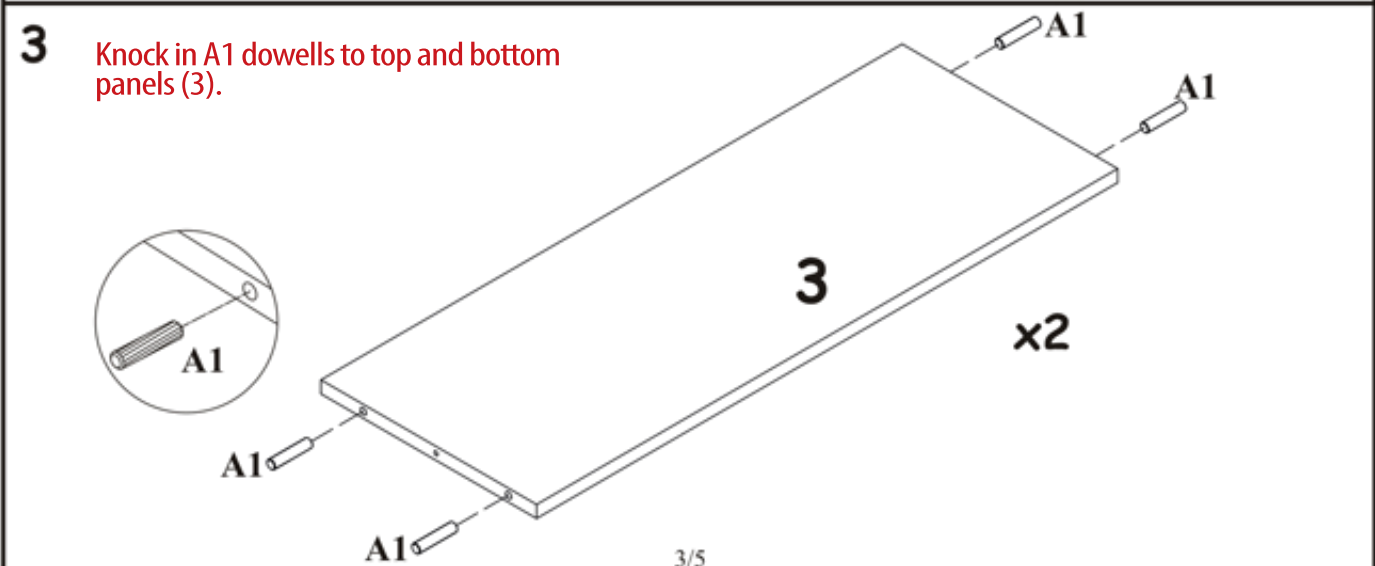
Screw on E8 hinge clips, and push in G7 shelf pegs.

2



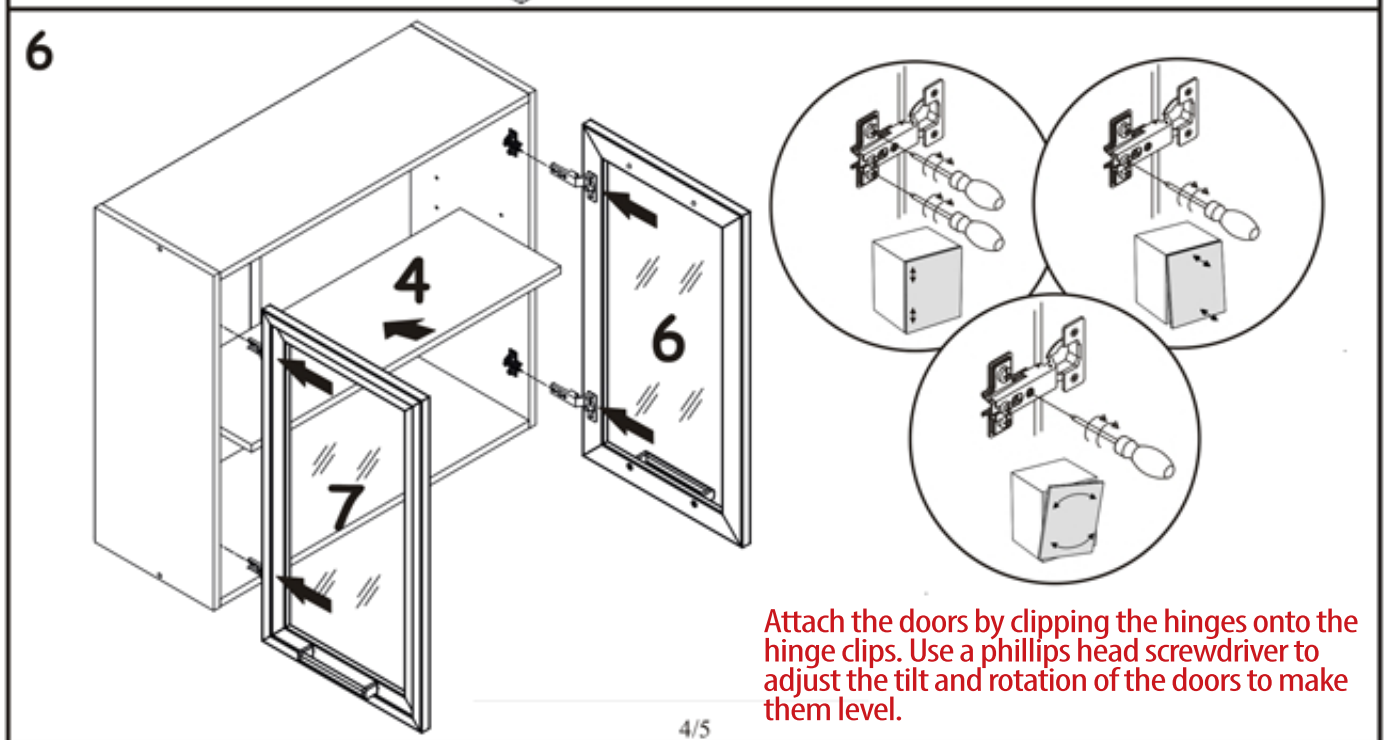
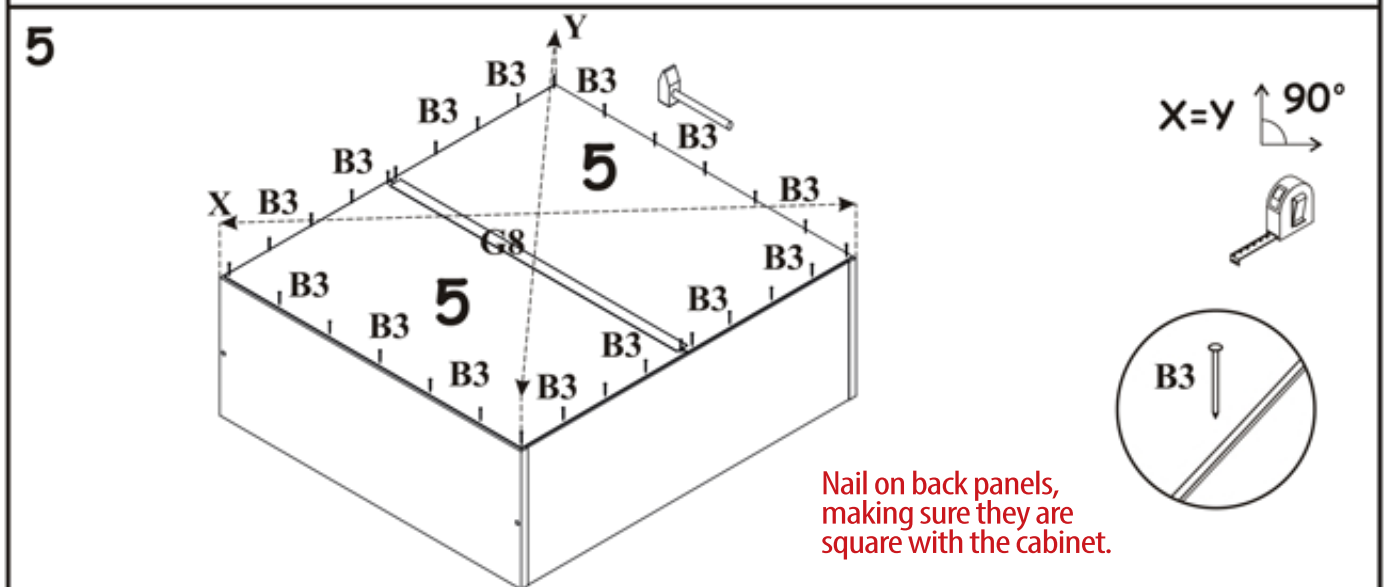
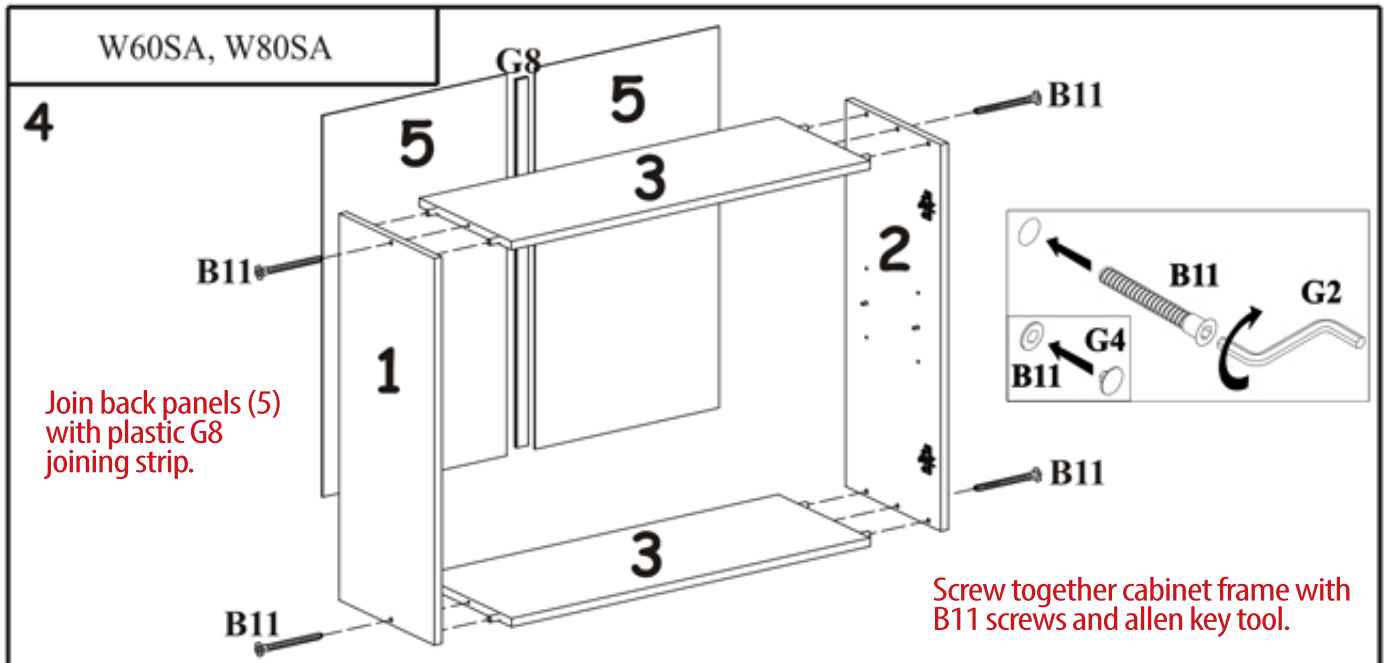
3

Knock in A1 dowells to top and bottom panels (3).



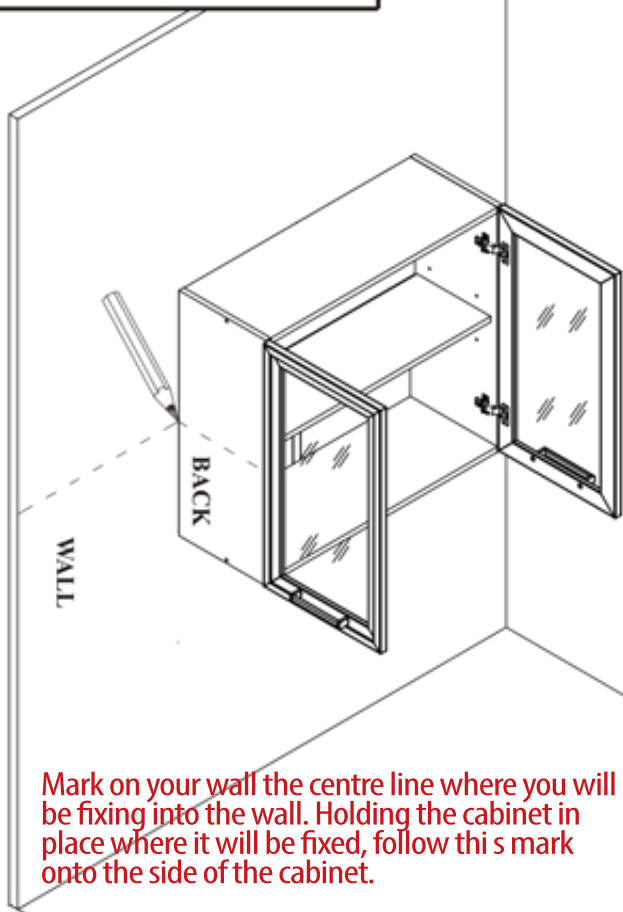
3/5

Phone: 09 414 4903 Mobile: 021 369 272 E-mail: info@kitchencabinets.co.nz Website: www.kitchencabinets.co.nz



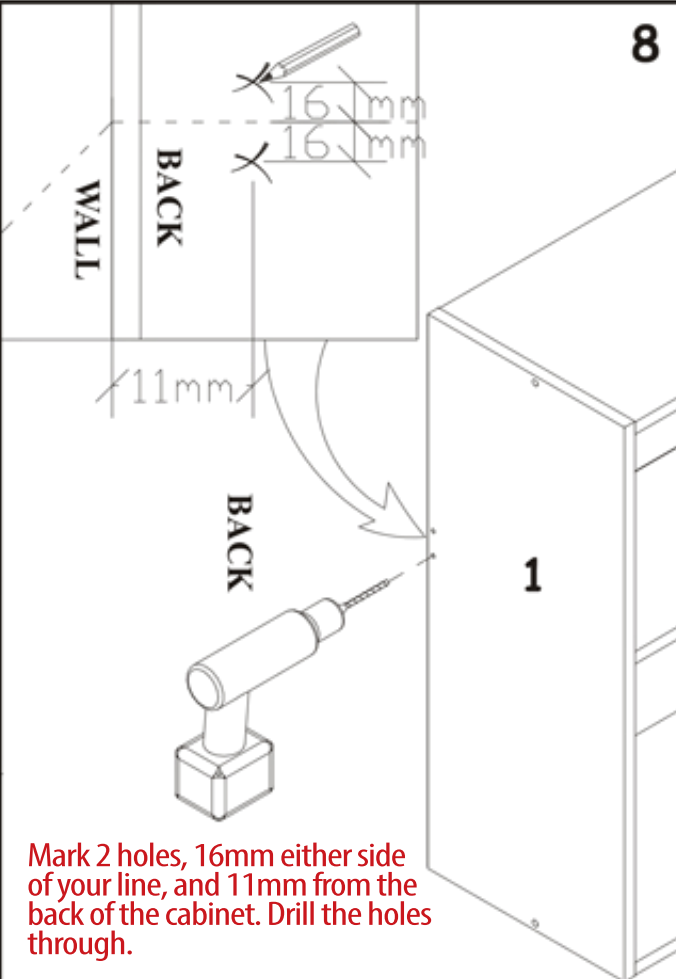
W60SA, W80SA

7



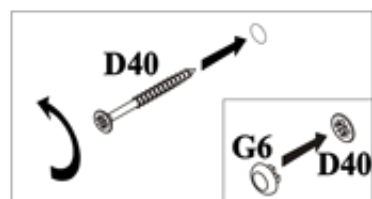
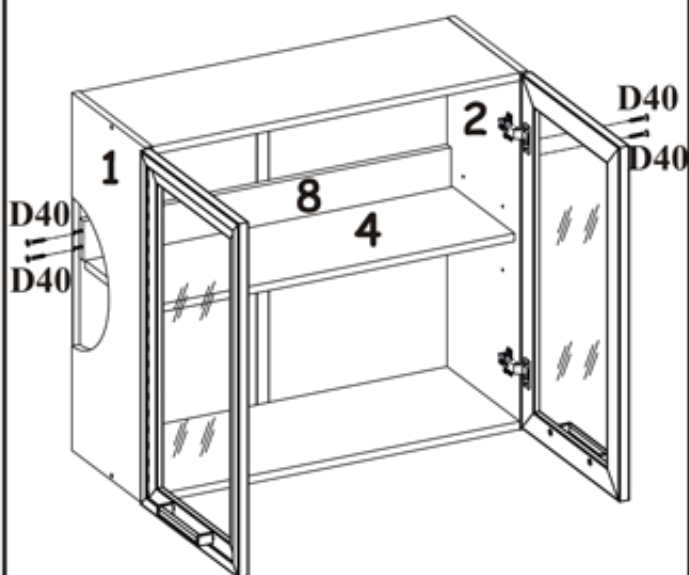
Mark on your wall the centre line where you will be fixing into the wall. Holding the cabinet in place where it will be fixed, follow this mark onto the side of the cabinet.

8



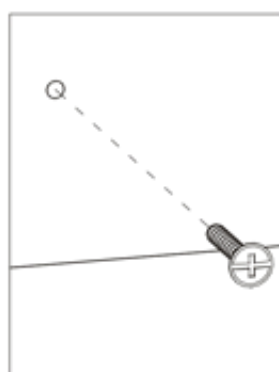
Mark 2 holes, 16mm either side of your line, and 11mm from the back of the cabinet. Drill the holes through.

9 Place panel 8 into the back of the cabinet and screw into place using the holes you drilled.

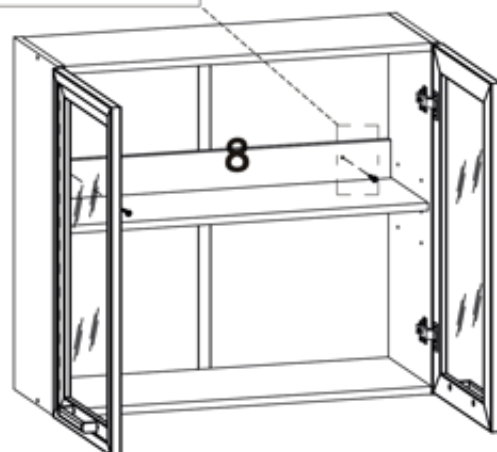


Cover screws with G6 screw caps.

10



Visit your local hardware store to confirm and purchase the correct type of wall fixings to suit your wall type. Now you can screw your cabinet to the wall through panel 8.



SCREWS FOR FIXING THE CABINET
MUST BE PURCHASED ON YOUR OWN
IN THE SPECIALISTIC SHOP